

China

The middle kingdom



Just about everywhere you travel in China you will find something at which to marvel, from the extraordinary 2,300-year-old Terracotta Army

With more than 4,000 years of recorded history, it is a country of superlatives – over 1.2 billion citizens which makes it the world's most populous country; 9.5 million square kilometres of land makes it the world's third largest country. With more than a fifth of the world's population being Chinese, China is now poised to dominate the 21st century. It is also known to have one of the world's oldest civilisations.

in Xian, to the fantastic landscapes of Guilin where limestone mountains rise like sugar loaves above the river and plains, from Neolithic villages to the go-getting modernity of Hong Kong, from Beijing's burgeoning skyline to the towering ramparts of the Himalayas.



Dazzling effigies, a part of Hong Kong's varied festivals



Hong Kong



Shopping

What you can buy – Electronics, optical goods, silk, antiques, arts and crafts, clothes, furniture, watches, jewellery and leather goods.
Where you can buy – Shopping malls, department stores, boutiques, street and night markets.

Entertainment

Variety of nightlife – restaurants, karaoke bars, pubs and discothèques; traditional entertainment, Chinese opera and acrobatic arts.

Sports and leisure

Golf, hiking and tai chi.

Events

Hong Kong Sale (July – September and December – February); Shanghai Music Festival (May); Shanghai Formula One Grand Prix (April); Hong Kong Cricket Sixes (November); Hong Kong Rugby Sevens (March).

Today, one can also find friendly people, spectacular architecture and towering skylines in Shanghai and Beijing a wealth of luxury accommodations and as always, exquisite cuisines.



Sightseeing

Historical landmarks – The Great Wall of China, Beijing's Forbidden City, Xian's Terracotta Army, palaces, temples, museums, gardens, parks, stone forests and archaeological sites.

Accommodation

Superior to medium class city centre hotels.

Family activities

Zoos and parks.



Discover China

10 days/9 nights • Air and chauffeur-driven private car tour

Beijing • Xian • Shanghai

- The Great Wall
- Tiananmen Square and the Forbidden City
- The Terracotta Army in Xian
- Jade Buddha Temple in Shanghai
- Su Zhou – Venice of The East
- Zhou Zhuang
- Beijing and Shanghai

This tour enables you to experience the best of China's rich cultural heritage and its dramatic urban regeneration in Shanghai.

Day 1: Beijing

Arrive in Beijing and transfer to your hotel. Spend the day at leisure.

Day 2: Beijing

In the morning, visit Tiananmen Square, around which are some of China's most important buildings including the Great Hall of the People and the Museum of Chinese History. In the afternoon, visit the Forbidden City.

Day 3: Beijing

Visit the Great Wall of China, the world's largest structure, before continuing to the Ming Tombs, the resting place of 13 emperors of the Ming dynasty.

Day 4: Beijing

Explore the city on your own.

Day 5: Beijing – Xian

After breakfast, transfer to the airport for your flight to Xian. Visit the Big Wild Goose Pagoda built over 1,300 years ago, the 600-year-old Bell Tower and the Shaanxi Provincial Museum.

Day 6: Xian

After breakfast, set out to see the extraordinary Terracotta Army. In the afternoon, visit the Ban Po Museum, where the remains of a neolithic society dating back 8,000 years are displayed.



Day 7: Xian – Shanghai

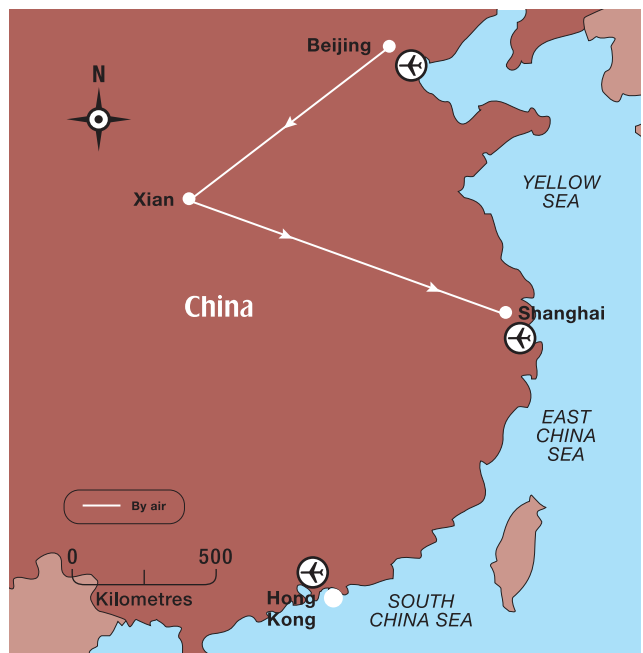
After breakfast, transfer to the airport for your flight to Shanghai. Visit the Bund area – Shanghai's Wall Street, the Yuyuan Garden built in 1559 and the Jade Buddha Temple. Spend the rest of the day at leisure.

Day 8: Shanghai

After breakfast, experience Su Zhou – 'The Venice of The East' and Zhou Zhuang, well-known for its dreamy landscape and simple architecture.

Days 9 and 10: Shanghai

These two days are free to spend at leisure. Catch up with last-minute shopping before you transfer to the airport for your return flight.



Tour available as:

- Private chauffeur-drive – Including car or mini coach, driver and pre-booked accommodation.



Hong Kong

A taste of the East

Combining Chinese and European cultural heritages with a high-powered attitude to business and leisure, Hong Kong is one of the most stimulating cities on earth – the shopping is unsurpassed, whether in open-air markets, factory outlets, giant malls or exclusive boutiques. Food lovers can savour some of the best Chinese food in the world; visitors can investigate the attractive Repulse Bay, see the world’s largest Buddha on Lantau Island, ride the Peak tram for magnificent views, or enjoy a ride on the historic Star Ferry. For those seeking entertainment the nightlife is as exciting and varied as any metropolitan city around the world.

Places of interest: Victoria Peak; Madame Tussaud’s; Stanley Village; Repulse Bay; Hong Kong Science Museum; Hong Kong Zoological and Botanical Gardens.

For the family: Ocean Park; Snoopy’s World and Teddy Bear Kingdom (indoor amusement park).

Best buys: Jewellery, watches, antiques, silk, fashions, shoes, jade, porcelain and handicrafts. Available at **Pacific Place**, Western Market,

The Landmark, The Galleria and Prince’s Building; Bargains galore at **Temple Street Night Market** and **Stanley Market**.



Average climate in Hong Kong											
		J	F	M	A	M	J	J	A	S	O
	MAX °C	18	17	19	24	28	29	31	31	29	27
	MIN °C	13	13	16	19	23	26	26	26	25	23
	HRS	5	4	3	4	5	5	8	7	7	8
	MM	33	46	74	136	290	390	381	367	257	114
Daily maximum and minimum averages are guides only and may vary.											



Hong Kong Disneyland

Magical moments

Hong Kong Disneyland offers a world of fun, fantasy and non-stop entertainment for the family. With four fabulous lands to choose from, you can be certain of an action-packed time. Step onto **Main Street, U.S.A.**, bringing to life a typical American town of the early 1900s, with its steam trains and colourful marching bands and parades; live your own happily-ever-after in **Fantasyland**, a timeless realm of imagination and enchantment where, beyond the drawbridge that leads into the fairy tale castle, classic stories are magically brought to life in nine enthralling adventures; launch into the future in **Tomorrowland** through a galaxy of thrilling adventures – blast off from **Space Mountain**, rocket through the sky on your own spaceship, or save the universe with **Buzz Lightyear**; and journey through **Adventureland** to explore the intrigue, mystery, fantastic sights and stunning surprises of uncharted territory.



Come and enjoy the enchantment of Hong Kong Disneyland Resort.



St Paul's Cathedral

Macau Extravaganza

Full-day seat-in-coach excursion with lunch

Macau is an example of east-meets-west integration, refined over more than four centuries since Portuguese explorers acquired the town as a trading port.

We transfer you to the ferry terminal for departure to Macau, where your tour begins with a visit to the tiny **Na Tcha Temple** (a World Heritage site) built in 1888.



Nearby is a section of the **Old City Walls** (a World Heritage site), built by the Portuguese in the 16th century.

Your journey continues to **Mount Fortress** (a World Heritage site), built in 1626, whose walls stand nine metres high and to the **Temple of A-Ma** (a World Heritage site), the Goddess of Seafarers, who, legend has it, calmed a storm that threatened to engulf a junk. The grateful passengers built a temple to revere her and named the town **A-Ma-Gau**, which later became corrupted to Macau. In contrast are the ruins of **St Paul's Cathedral**, a Roman Catholic Church built in 1602 and now an internationally recognised symbol of Macau.

Before taking the ferry back to Hong Kong you visit **Macau Tower's** 223-metre high observation deck for spectacular views and the casino, the first of the many planned which will have turned Macau into Asia's Las Vegas.

The Island Shangri-La Hong Kong ✓✓✓✓✓



Location: Hong Kong Island.

This award-winning hotel is located in the heart of the city's Central district. The signature tower, a gleaming architectural jewel containing 770 chandeliers, rises directly above Pacific Place, a prestigious entertainment, commercial and shopping complex in the Admiralty area on Hong Kong Island. Hong Kong International Airport at Chek Lap Kok is 41 kilometres away.

Exquisitely appointed with Asian-accented European furnishings, the hotel's luxury rooms and suites are among the largest in Hong Kong and feature breathtaking views of the city and world-famous Victoria Harbour. It is perfect for guests looking for an exclusive sanctuary in the midst of an exciting cosmopolitan destination.

Facilities: 565 rooms and suites. Eight restaurants, bars, 24-hour room service, shops, beauty salon, safety deposit boxes, business centre and non-smoking rooms.



Deluxe Harbour View Room

Deluxe Peak View Rooms:

Air-conditioning, hairdryer, bathrobe, TV, DVD player, data ports, minibar, tea and coffee and safe.

Deluxe Harbour View Rooms: Additionally these rooms offer a view of Hong Kong harbour.

Sports and leisure: Outdoor pool, fitness centre, spa, sauna, jacuzzi, steam bath, solarium and massage.

Check-in: 1400 hours

Check-out: 1200 hours.



Hyatt Regency Hong Kong Tsim Sha Tsui

Location: Kowloon.

This hotel is located in one of the tallest skyscrapers of the Kowloon area, in the heart of Tsim Sha Tsui business and shopping district. Elegantly designed rooms command spectacular views of Victoria Harbour, Hong Kong Island and Kowloon. The hotel is directly accessible from Tsim Sha Tsui subway station located below the hotel. Hong Kong International Airport at Chek Lap Kok is 34 kilometres away.

Facilities: 381 rooms and suites. Three restaurants, bar, 24-hour room

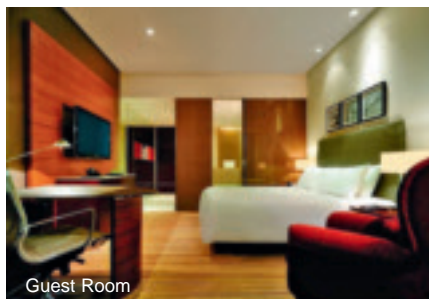
service, shops, safety deposit boxes and business centre.

Guest Rooms: Air-conditioning, hairdryer, bathrobe, TV, iPod docking station, data ports, wireless connectivity, minibar, tea and coffee, iron and safe.

Sports and leisure: Outdoor pool and fitness centre.

Check-in: 1400 hours

Check-out: 1200 hours.



Guest Room



InterContinental Grand Stanford Hong Kong

Location: Kowloon.

This hotel, offering panoramic harbour views of Hong Kong Island, is situated in Kowloon's Tsim Sha Tsui East area. It is adjacent to the ferry link to Hong Kong Island and set in the heart of the shopping and entertainment district. Hong Kong International Airport at Chek Lap Kok is 35 kilometres away.

Facilities: 579 rooms and suites. Three restaurants, bar, lounge, 24-hour room service, shops, safety deposit boxes, business centre, interconnecting and non-smoking rooms.

Deluxe Rooms: Air-conditioning, hairdryer, bathrobe, TV, DVD, data ports, wireless connectivity, minibar, tea and coffee, iron and safe.

Harbour View Rooms: Additionally these rooms offer a harbour view.

Sports and leisure: Outdoor heated pool, 24-hour fitness centre, spa, sauna, jacuzzi and massage.

Check-in: 1400 hours

Check-out: 1200 hours.



Deluxe Room

The Excelsior



Location: Hong Kong Island.

This friendly hotel provides fine facilities in an excellent location. It is situated on the waterfront of Victoria Harbour and opposite the Yacht Club and the Noon Day Gun. The entertainment, shopping and commercial districts are close by. Hong Kong International Airport at Chek Lap Kok is 40 kilometres away.

Facilities: 885 rooms and suites. Seven restaurants, bars, 24-hour room service, shops, safety deposit boxes, business centre, interconnecting and non-smoking rooms.

Standard Rooms: Air-conditioning, hairdryer, TV, data ports, minibar, tea and coffee, iron and safe.

Deluxe Full Harbour View Rooms: Additionally these rooms provide stunning views of the harbour.

Sports and leisure: Fitness centre, sauna and two air-conditioned tennis courts.

Check-in: 1400 hours

Check-out: 1200 hours.



Deluxe Full Harbour View Room



Royal Plaza Hotel



Location: Kowloon.

Conveniently located in Mongkok in the heart of Kowloon, the hotel sits atop the Mongkok East Station Mass Transit Railway. It is surrounded by local food outlets, tourist attractions, entertainment venues and is linked to the shopping mall. Hong Kong International Airport at Chek Lap Kok is 35 kilometres away.

Facilities: 693 rooms and suites. Three restaurants, 24-hour room service, shopping arcade, safety deposit boxes, business centre, interconnecting and non-smoking rooms.

Superior Rooms: Air-conditioning, hairdryer, TV, data ports, minibar, tea and coffee, iron and safe.

Sports and leisure: Outdoor pool and children's pool, fitness centre, sauna, steam bath and jacuzzi.

Check-in: 1400 hours

Check-out: 1200 hours.



Superior Room



Hong Kong Disneyland Hotel

Location: Lantau Island.

Within walking distance of the Hong Kong Disneyland Park, the style of this hotel is inspired by the late 1800's Victorian era of England and colonial America. This theme has been dubbed "Micktorian" – a combination of Mickey Mouse and Victorian. This luxurious resort is set in a lush and relaxing landscape of gardens and has endless ocean views. Hong Kong International Airport at Chek Lap Kok is 12 kilometres away.

Facilities: 400 rooms and suites. Five restaurants, bars, 24-hour room service, shop, beauty salon, babysitting and non-smoking rooms. Suitable for the physically challenged.

Garden View Rooms: Air-conditioning, LCD TV, data ports, internet access, minibar and safe.

Sports and leisure: Indoor pool and outdoor pools, fitness centre, spa and two tennis courts.

Check-in: 1500 hours

Check-out: 1100 hours.



Garden View Room

Disney's Hollywood Hotel



Location: Lantau Island.

This hotel has an Art Deco style reminiscent of classic Hollywood, overlooking the Hong Kong Disneyland Park in a U-shaped structure built around a central courtyard. The garden unfolds like a map of Los Angeles with popular and well-known Hollywood streets, landmarks and icons. The rooms overlook beautifully manicured greenery. This hotel is a fun-filled experience for the whole family. Hong Kong International Airport at Chek Lap Kok is 12 kilometres away.

Facilities: 600 rooms and suites. Five restaurants, bars, shop, babysitting and non-smoking rooms.

Garden View Rooms: Air-conditioning, LCD TV, data ports, internet access and safe.

Sports and leisure: Outdoor pool with slide, fitness centre and sauna.

Check-in: 1500 hours

Check-out: 1100 hours.



Garden View Room





Summer Palace

Beijing, China’s cultural, political, social and economic hub is a city hurtling into the future so rapidly that it is easy to forget that it has a history stretching back over 3,000 years and was the seat of the Mongol, Ming and Qing dynasties. For so long hidden from the view of outsiders, Beijing now welcomes the world – and the world has taken up the invitation with enthusiasm.

First-time travellers are bound to be amazed at the sheer size of this city. Even frequent visitors are dazzled at the pace of progress with new buildings that appear almost overnight. With vast malls, fashionably dressed men and women, eager shoppers and modern car brands, Beijing comes alive at night with nightclubs and discos. Yet, if you leave the main roads and broad avenues and head down the alleyways between the one-storey houses, it is as if you have entered a time warp: here hawkers still shout their wares as they ride by on creaking bicycles, old folk wear their Mao suits and people sit by the side of the street to swap gossip, get their haircut and eat their bowls of fragrant, steaming noodles.

The mix of the traditional and the new can be seen everywhere in the city.



Temple of Heaven, Beijing

Although many historic buildings have been demolished to make way for glass-and-steel skyscrapers, ancient China is still visible in the Forbidden City, Summer Palace, Temple of Heaven Park, Lama Temple and the Great Wall.

Places of interest:

Tiananmen Square; the Temple of Heaven; the **Summer Palace**; the Drum Tower; the Bell Tower; the **Great Wall** and the **Forbidden City**.

For the family:




Bei Hai Park; Jinshan Park and Beijing Amusement Park.

Best buys: These can be found in **Silk Alley**, **Wangfujing**, **Xidan**, **Jianguomen** and Liu Li Chang Street.

Out and about: The city has a good choice of restaurants, bars and karaoke bars. The Sanlitun diplomatic area also has numerous nightclubs. Traditional opera performances by the Beijing Opera.

Sporting attractions: Tai chi, gymnastics and table tennis.



Average climate in Beijing													
		J	F	M	A	M	J	J	A	S	O	N	D
	MAX °C	1	4	11	20	26	30	31	29	26	19	10	1
	MIN °C	-10	-7	-1	7	13	18	22	20	14	7	-1	-8
	HRS	7	7	8	9	8	7	7	7	8	8	6	6
	MM	76	76	76	102	152	203	305	254	178	152	102	78
Daily maximum and minimum averages are guides only and may vary.													

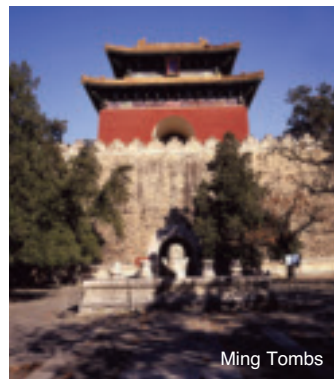


Great Wall Badaling and Ming Tombs

Full-day chauffeur-driven private car or seat-in-coach excursion with lunch

This enthralling excursion combines two of China's most fascinating sights – the Ming Tombs and a section of the Great Wall.

Driving north from Beijing your first stop is the **Ming Tombs**, the final resting place of 13 of the 16 Ming Emperors. The tombs follow a standard design, typically consisting of a main gate which leads through a series of courtyards to the main hall, through which stand further gateways and arches taking you to the **Soul Tower**, behind which rises the burial mound itself.



Ming Tombs

After lunch we take you to **Great Wall**, one of the world's most extraordinary feats of construction (a UNESCO World Heritage site), which winds for 6,700 kilometres across deserts, grasslands, mountains and plateaus from the North Korean border through Inner Mongolia to the far north-west province of Xinjiang. Whilst the wall itself is over 2,000 years old, the **Badaling** section was reinforced with masonry during the Ming dynasty and is a prime example of this colossal structure.

We also include a visit to the **Longdi Jade Factory**, where you can watch the stone being shaped by craftsmen who have inherited their skills from the great masters of the past.

China World Hotel



Location: China World Trade Centre.

Located in the heart of Beijing's diplomatic and business district, the 716-room Shangri-La's China World Hotel is the leading address for distinguished leaders as well as discerning travellers. The award-winning hotel stands tall over the majestic China World Trade Centre complex, including the China World Exhibition Centre and shopping mall. Beijing International Airport is 30 kilometres away.

Comfort, luxury and style define the fully-refurbished guest rooms and suites, all decorated with luxurious furnishings and contemporary Asian art.

Look no further for a wide choice of different cuisine options in Beijing to tantalise your taste buds. Dining opportunities vary from creative seafood at Aria and classic Chinese splendour at Summer Palace, to the bustling, colourful buzz of Scene a Café's showcase kitchens and the refined elegance of the lobby lounge.

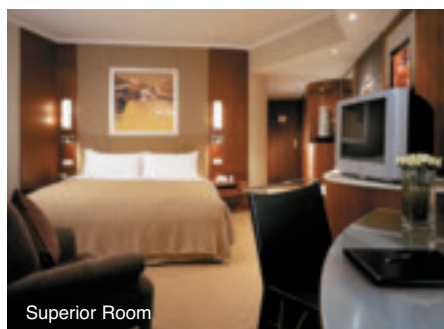
Facilities: 716 rooms and suites. Four restaurants, bar, 24-hour room service, shop, safety deposit boxes, business centre, babysitting, interconnecting and non-smoking rooms.

Superior Rooms: Air-conditioning, hairdryer, bathrobe, TV, wireless connectivity, minibar, tea and coffee and safe.

Sports and leisure: Indoor pool, fitness centre, jacuzzi, steam room, massage, tennis courts and squash court.

Check-in: 1400 hours

Check-out: 1200 hours.



Superior Room



Raffles Beijing Hotel



Location: City centre.

This hotel is an icon of Beijing's historical heritage. Ideally situated at the crossroads of famous Chang An Avenue and Wangfujing, in the heart of the prestigious commercial districts and a few minutes away from the Forbidden City, historical Tiananmen Square, Silk Market and other famous sights. Beijing International Airport is 30 kilometres away.

Facilities: 171 rooms and suites. Four restaurants, bar, 24-hour room service, shopping centre, beauty salon, safety deposit boxes, business centre, library, interconnecting and non-smoking rooms.

Land Mark Rooms: Air-conditioning, hairdryer, bathrobe, TV, data ports, minibar, tea and coffee and safe.

Sports and leisure: Indoor swimming pool, spa, sauna, jacuzzi, steam bath and massage.

Check-in: 1400 hours

Check-out: 1200 hours.



Land Mark Room



Grand Mercure Xidan

Location: Xidan.

Located in the heart of the shopping, commercial and retail district of Beijing and within close proximity of Tiananmen Square and the Forbidden City, the hotel is walking distance from the subway station. Beijing International Airport is 35 kilometres away.

Facilities: 290 rooms and suites. Two restaurants, bar, 24-hour room service, shop, hairdresser, beauty salon, safety deposit boxes, business centre, babysitting, interconnecting and non-smoking rooms. Suitable for the physically challenged.

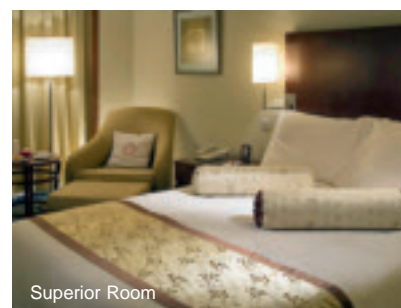
Superior Rooms: Air-conditioning, hairdryer, TV, data ports, minibar, tea and coffee and safe.

Deluxe Rooms: Additionally these rooms are larger.

Sports and leisure: Indoor pool, fitness centre, spa, sauna, jacuzzi, steam bath and massage.

Check-in: 1400 hours

Check-out: 1200 hours.



Superior Room

Holiday Inn Central Plaza

Location: Xuanwuqu.

An award-winning hotel conveniently located in Guanganmen commercial and civic area, within walking distance from the Financial Street. This hotel is close to tourist and shopping attractions such as Wangfujing shopping area, Silk Market, Temple of Heaven, Tiananmen Square and the Forbidden City. Beijing International Airport is 30 kilometres away.

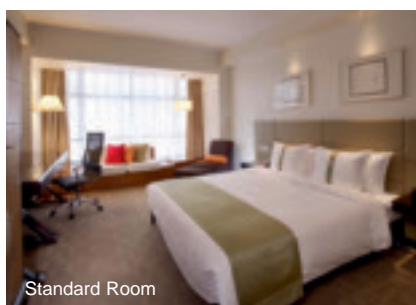
Facilities: 349 rooms and suites. Two restaurants, two bars, 24-hour room service, shops, hairdresser, beauty salon, safety deposit boxes, business centre, babysitting, interconnecting and non-smoking rooms.

Standard Rooms: Air-conditioning, hairdryer, TV, data ports, minibar, tea and coffee and safe.

Sports and leisure: Indoor pool, fitness centre, spa, sauna, steam bath and massage.

Check-in: 1400 hours

Check-out: 1200 hours.



Standard Room



Shanghai

China's cosmopolitan hub

Shanghai, situated on the banks of the Huangpu River, is the world's largest seaport and China's most populous city. Widely regarded as the hub of China's rapidly expanding economy, the city also serves as one of the nation's most important cultural, commercial, financial, industrial and communications centres.

Originally, a small town deriving its income from fishing, Shanghai became an important commercial centre in the 1920s and '30s, when international banks and businesses built their headquarters along the Bund in an extraordinary mixture of different architectural styles including Gothic, Baroque, Romanesque and Renaissance. Together, they form a skyline reminiscent of early New York although now dramatically overshadowed by the towering skyscrapers of the 21st century city.

There is no better way to get a flavour of Shanghai than strolling along Nanjing Road, once the city's main market and now lined with smart designer shops, boutiques, nightclubs and restaurants, to emerge at the bustling riverfront, the original source of the city's prosperity.

While not possessing the epic history of Beijing or Xi'an's grander sights (before the 19th century, Shanghai was not considered to be one of the country's major cities) it has long been a centre of popular culture and intellectual discourse. Today, Shanghai is by far China's most cosmopolitan, sophisticated city.

Places of interest: The **Jade Buddha Temple**; the **Old City**; the waterfront **Bund area**; Huangpu Park; Mandarin Gardens Bazaar;

Oriental Pearl Tower and Shanghai Museum of Art and History.

For the family: Yuyuan Gardens; Shanghai Centre Theatre, home of the famous **Shanghai Acrobatic Troupe**; Huangpu River tours.

Out and about: Entertainment is plentiful and the city boasts a wide choice of trendy discothèques, jazz clubs, bars and restaurants.

Best buys: Silk, cashmere, handicrafts and antiques. Shanghai has numerous department stores, shopping centres and antique markets. Nanjing Lu Street and Huaihai Road are the most popular areas.

Sporting attractions: Bowling, badminton and table tennis.

Average climate in Shanghai

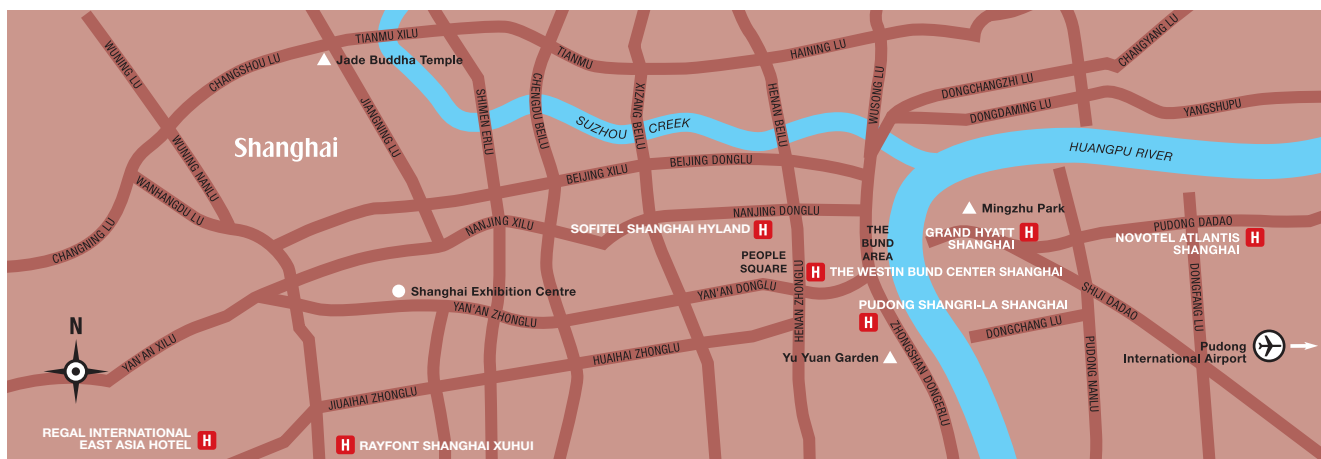
		J	F	M	A	M	J	J	A	S	O	N	D
	MAX °C	3	5	12	21	28	32	31	31	27	21	11	4
	MIN °C	-8	-6	0	8	14	19	23	22	15	8	0	-6
	HRS	6	8	7	6	6	7	7	6	6	5	5	5
	MM	45	65	81	95	115	157	142	140	50	47	54	45

Daily maximum and minimum averages are guides only and may vary.

● Landmarks

▲ Places of interest

H HOTELS





Hang Zhou's West Lake

Hang Zhou – Heaven on Earth

Full-day chauffeur-driven private car excursion with lunch

A two-and-a-half hour drive from Shanghai, **Hang Zhou**, was described by Marco Polo as “beyond dispute the finest and the noblest in the world”. Seven centuries later Hang Zhou is still one of the most fascinating cities in all of China.

Hang Zhou was settled as early as 4,700 years ago, but gained importance with the opening in the sixth century of the Grand Canal, which linked the area with other trading centres.

Starting with a cruise on the **West Lake**, immortalised by countless painters and artists who found their inspiration in this ‘little bit of paradise’, you will see a host of ornate pagodas and unforgettable scenery including the **Three Pools** mirroring the Moon, the Fish & Flower harbour, the **Bai and Su Causeways** and **Solitary Hill**.

After lunch we take you to **Guo's Villa**, one of the garden masterpieces of the region. The garden, cleverly juxtaposing shade and light, and yin and yang, is a wonderful embodiment of the Chinese wisdom of Tao.

Before returning to Shanghai you visit the **China Tea Museum**, where you will learn about the history of Chinese tea and the traditional tea ceremony and the **Six Harmonies Pagoda**, a truly magnificent example of ancient Chinese architecture.



Tea plantation

Sofitel Shanghai Hyland ✓✓✓✓✓

Location: Puxi.

Located in the heart of Shanghai, on Nanjing Road pedestrian shopping street, the hotel has easy access to nearby attractions such as The Bund, People's Square, Shanghai Museum, Shanghai Grand Theatre, Shanghai Urban Planning Museum, Yu Garden, Xintiandi, Former French Concession and Jade Buddha Temple. The hotel is also adjacent to the Nanjing Road East Metro Station. Pudong International Airport is 50 kilometres away.

The hotel restaurants also provide the perfect setting for relaxing and socialising. The Mao Restaurant specialises in Cantonese specialties and Dim Sum while the Mosaic coffee shop is an all-day dining venue in open kitchen concept and serves international cuisines. Also available at this hotel is their exclusive Club Sofitel and its club lounge located on the 30th floor and overlooking a panoramic view of Pudong and the Pearl TV Tower.

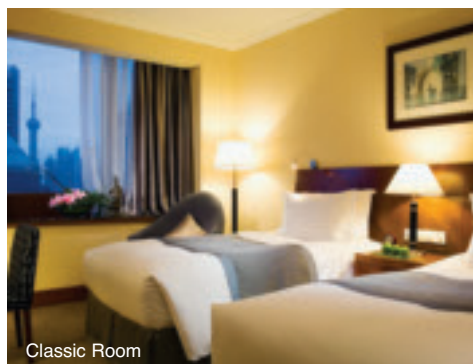
Facilities: 401 rooms and suites. Two restaurants, bar, 24-hour room service, shops, safety deposit boxes, business centre, interconnecting and non-smoking rooms. Suitable for the physically challenged.

Classic Rooms: Air-conditioning, hairdryer, bathrobe, TV, data ports, minibar, tea and coffee and safe.

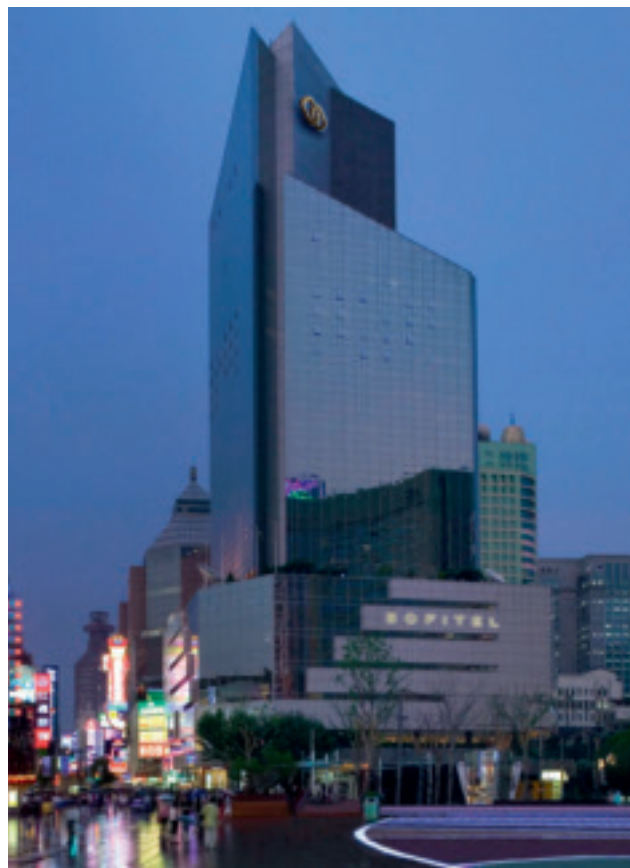
Sports and leisure: Fitness centre, sauna, massage.

Check-in: 1400 hours

Check-out: 1200 hours.



Classic Room



Grand Hyatt Shanghai



Location: Pudong.

Located in the heart of the city's financial district and close to the shopping and entertainment areas, this hotel with 88 storeys is the highest hotel in the world. The hotel lobby is located on the 53rd floor and goes up to the 87th floor. Pudong International Airport is 40 kilometres away.

Facilities: 555 rooms and suites. Seven restaurants, four bars, 24-hour room service, nightclub, shopping arcade, hairdresser, beauty salon,

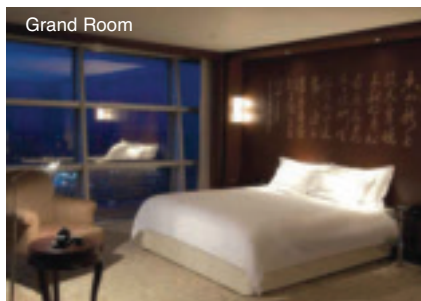
safety deposit boxes, business centre, interconnecting and non-smoking rooms.

Grand Rooms: Air-conditioning, hairdryer, bathrobe, TV, data ports, minibar, tea and coffee and safe.

Sports and leisure: Indoor pool, fitness centre, spa, sauna, jacuzzi, steam bath and massage.

Check-in: 1400 hours

Check-out: 1200 hours.



Grand Room



Pudong Shangri-La, Shanghai

Location: Pudong.

This award-winning hotel is centrally located in the Lujiazui commercial and financial district, on the Eastern bank of the Huangpu River, offering unparalleled views of the famous Bund and Shanghai's magnificent skyline. The hotel is within close proximity to subways connecting Pudong and Puxi. Pudong International Airport is 30 kilometres away.

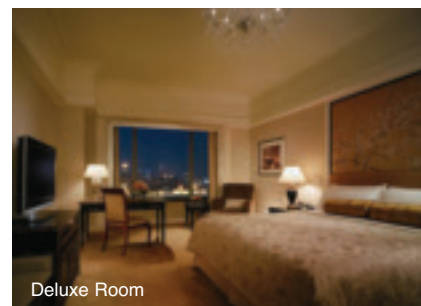
Facilities: 950 rooms and suites. Six restaurants, five bars, 24-hour room service, shops, hairdresser, beauty salon, safety deposit boxes, business centre, interconnecting and non-smoking rooms.

Deluxe Rooms: Air-conditioning, hairdryer, TV, data ports, minibar, tea and coffee, iron and safe.

Sports and leisure: Two indoor swimming pools, fitness centre, spa, sauna, jacuzzi, steam bath, massage and tennis court.

Check-in: 1400 hours

Check-out: 1200 hours.



Deluxe Room

The Westin Bund Center Shanghai



Location: Puxi.

The hotel is located within walking distance from the magnificent Bund Waterfront. Its two towers boast inspirational Art Deco décor and exciting Shanghai skyline views over the Huangpu River. The city's business, shopping, entertainment area are all within easy access. Pudong International Airport is 47 kilometres away.

Facilities: 570 rooms and suites. Three restaurants, two bars, 24-hour room service, shop, hairdresser, beauty salon, safety deposit boxes,

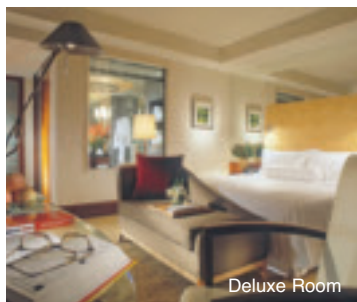
business centre, children's activities, babysitting, interconnecting and non-smoking rooms. Suitable for the physically challenged.

Deluxe Rooms: Air-conditioning, hairdryer, bathrobe, TV, fax machine, data ports, minibar, tea and coffee, iron and safe.

Sports and leisure: Indoor pool, fitness centre, spa, sauna, jacuzzi, steam bath and massage.

Check-in: 1400 hours

Check-out: 1200 hours.



Deluxe Room



Regal International East Asia Hotel

Location: Puxi.

This luxurious hotel is ideally located in the prestigious diplomatic district on Hengshan Road. With restaurants, cafés, exquisite shops and beautifully arranged gardens scattered along the impressive tree-lined promenade. All the rooms are tastefully designed with hints of oriental flair, offering guest tranquillity and serenity in a total relaxed environment. Pudong International Airport is 35 kilometres away.

Facilities: 330 rooms and suites. Four restaurants, bar, 24-hour room service, beauty salon, safety deposit boxes, babysitting, interconnecting

and non-smoking rooms. Suitable for the physically challenged.

Deluxe Rooms: Air-conditioning, hairdryer, bathrobe, TV, minibar, tea and coffee and safe.

Sports and leisure: Indoor pool, fitness centre, spa, massage, tennis courts, squash courts and bowling lanes.

Check-in: 1400 hours

Check-out: 1200 hours.



Deluxe Room



Novotel Atlantis Shanghai

Location: Pudong.

The hotel is located in the heart of Pudong's premier financial district and boasts beautiful interiors and a full range of modern amenities.

It is close to the Shanghai Exhibition Centre. A short drive away is the Bund Waterfront and the legendary shopping along Nanjing Road. Pudong International Airport is 37 kilometres away.

Facilities: 303 rooms and suites. Four restaurants, three bars, 24-hour room service, shops, hairdresser, beauty salon, safety deposit boxes, business centre, babysitting, interconnecting and non-smoking rooms.

Superior Rooms: Air-conditioning, hairdryer, bathrobe, TV, data ports, minibar, tea and coffee and safe.

Sports and leisure: Indoor pool, fitness centre, aerobics, spa, sauna, jacuzzi, steam bath and massage.

Check-in: 1400 hours

Check-out: 1200 hours.



Superior Room



Rayfont Shanghai Xuhui

Location: Puxi.

This hotel is conveniently located in the downtown commercial centre of Shanghai along Zhao Jia Bang Road. It is in close proximity to some of the busiest shopping areas like Xu Jia Hui, Huai Hai Road and Xin Tian Di. The décor is a fusion of fashion, art and philosophy and the final result is simple yet elegant. Pudong International Airport is 45 kilometres away.

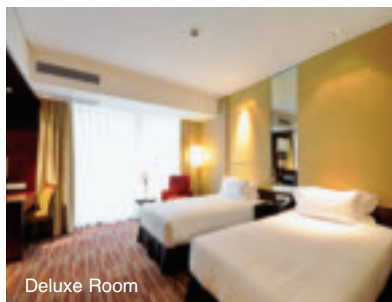
Facilities: 489 rooms and suites. Restaurant, 24-hour room service and safety deposit boxes.

Deluxe Rooms: Air-conditioning, hairdryer, TV, data ports, wireless connectivity and safe.

Sports and leisure: Indoor pool, fitness room, sauna, massage, table tennis and tennis courts.

Check-in: 1400 hours

Check-out: 1200 hours.



Deluxe Room

