

Switzerland

Alpine wonderland



(image swiss-image.ch)

Alphorn players

Switzerland's compact size makes it easy to explore its fascinating towns and cities, lush meadows, wooded valleys, rolling green hills, peaceful lakes and spectacular mountains and glaciers.

There is more to Switzerland

than chocolate, watches and the Matterhorn. While majestic mountain landscapes and secluded valleys open up endless possibilities for hiking and biking trips, the scenic beauty of the country's lakes can be enjoyed at leisure onboard a lake steamer. Even though hiking is a popular pastime among the locals, the Swiss countryside has many quiet trails and restful places that are a haven for travellers seeking peace and quiet. Visitors can also enjoy the rejuvenating benefits of a 'wellness package' offered by many of Switzerland's world-famous spas and health resorts.

Sightseeing

With snow-capped Alps, forested hills, fairytale castles, renaissance cathedrals, shimmering lakes, stylish spas and luxury ski resorts – it's easy to see why Switzerland has been one of the world's top tourist destinations for the past two centuries.

It is the country that fashioned tourism, so it's no surprise that Switzerland caters to visitors all year-round. In spring and summer it offers lakeside chalets, mountain trails and spa resorts. In the sunny southern region of Ticino, near the Italian border, visitors will find palm-fringed Riviera-style resorts offering a host of water sports. Those keen on hiking and mountaineering will find over 31,000 miles (50,000 kilometres) of mountain and forest trails throughout the country.



(image swiss-image.ch)

Matterhorn



In November the country's ski resorts begin opening up and visitors pour in throughout the Christmas season until the snow begins to melt with the onset of spring. With the highest pistes in Europe, Switzerland's ski runs offer reliable snow and breathtaking views. Most resorts also have plenty to do for those not so keen on skiing, making Switzerland the perfect destination for a winter fantasy of log fires, fondues and glistening snow.

Switzerland's cities are pristine and beautifully laid out with famous Swiss precision. Zurich is known for being the intellectual and artistic centre of the country, sporting incredible architecture and more than 1,000 fountains, with many museums and galleries. Geneva is the principal city for the international community and is home to hundreds of world organisations. Its setting on the shores of Lake Geneva gives it a romantic atmosphere and the city has an exciting, if rather expensive, nightlife.

Accommodation

Conveniently located city hotels and holiday resorts.

Family activities

Alpamare water park Pfäffikon, Mount Titlis and Lucerne, Jungfrauoch – the Top of Europe, Chateau Chillon Montreux, zoos, chocolate factories, Glacier Garden, Swiss Transport Museum, and beautiful countryside and mountains. Visit a farm and see how the famous Swiss cheese is made.

Shopping

What you can buy – Precision watches, jewellery, hand-woven lace, woodcarvings, cutlery, designer clothes, high street fashion, fine cheeses and Swiss chocolate.

Where you can buy – Department stores, supermarkets and boutiques. Shops offer a great selection and goods are of very high quality.

Entertainment

Switzerland offers fine food and entertainment. Dining can vary from chalet-like traditional restaurants serving fondue to the latest fashionable eateries; nightlife includes clubs, bars and discothèques; the thriving cultural scene offers ballet, theatre and concerts.

Sports and leisure

Sailing, windsurfing, swimming, water-skiing, horse riding, paragliding, biking and hiking during summer. Skiing, snowboarding, cross-country skiing, ice skating and many other sports during winter.

Events

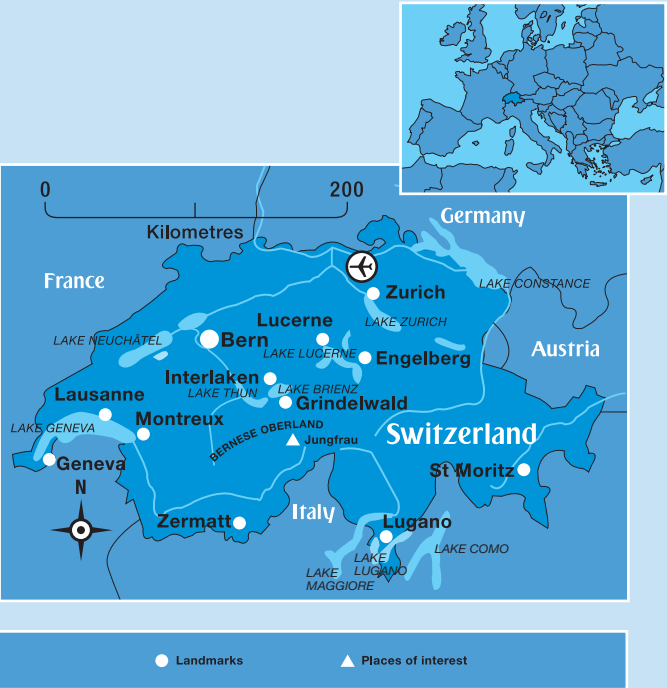
Zurich Festival (June – July); Geneva Festival (June); Montreux Jazz Festival (July); Festival of Geneva (July/August); Street Parade, Zurich (August); Lucerne Summer Festival (August – September); International Motor Show, Geneva (March).

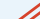


Honeymoon

Switzerland is a paradise on earth and is one of the most sought after destinations for a honeymoon. Its snow-capped mountains offer fun activities for honeymoon couples, wonderful views of glaciers, lakes and the romantic Alpine meadows. Alpine mountains offer numerous adventure trails for biking and hiking. Popular honeymoon places in Switzerland are Zurich, Geneva, Lucerne, Mount Titlis and Interlaken. Visit Switzerland for an unforgettable honeymoon vacation.

Exploring by road

Roads are well-surfaced and clearly signed, ideally suited for car rental (right-hand drive) and coach tours. Train travel is swift and reliable. A magnificent railway network is available to let you discover Switzerland in a safe and comfortable way. In summer, a tour by car is possible so that you can explore beautiful pass roads.



Average climate in Switzerland													
		J	F	M	A	M	J	J	A	S	O	N	D
	MAX °C	2	5	10	15	19	23	25	24	20	14	7	3
	MIN °C	-3	-2	1	4	8	12	14	13	11	6	2	-2
	HRS	2	3	5	6	7	7	8	7	6	4	2	1
	MM	74	70	64	76	102	130	135	124	102	77	73	64
Daily maximum and minimum averages are guides only and may vary.													

Swiss grand alpine tour

7 days/6 nights • Overland coach tour

Zurich • Lucerne • Engelberg • Interlaken • Berne • Geneva • Montreux • Zermatt • Lugano • St Moritz • Zurich

- Vibrant cities, graceful towns and picturesque villages – Zurich, Geneva, Bern, Zermatt, Lugano and St Moritz
- Scenic drives along lakes, countryside and mountains
- Exciting peaks of Jungfrau and Mount Titlis

This enthralling seven-day tour takes you to some of Switzerland's most attractive cities and enchanting villages, past crystal-clear lakes and high into the magnificent Alps. From elegant Zurich to the enchanting countryside of Lake Geneva, from picturesque Lucerne to the scenic beauty of Interlaken, from the breathtaking Alpine vistas at Mount Titlis to sophisticated St Moritz, this is a journey of fascination and delight.

Day 1: Zurich

Arrive in Zurich and transfer to your hotel. Overnight in Zurich.

Day 2: Zurich — Lucerne — Mount Titlis — Interlaken (124 Kilometres)

From Zurich we travel to mediaeval Lucerne, where you tour this lovely lakeside town and spend some time on your own to explore, before you continue to Engelberg and take a spectacular cable-car ride to Mount Titlis. Your Swiss odyssey then takes you to elegant Interlaken. Overnight in Interlaken.

Day 3: Interlaken — Berne — Geneva (233 Kilometres)

A short drive alongside Lake Thun and through gentle countryside brings you to Berne, Switzerland's breathtaking capital. After a tour of the old town we drive, via Gruyeres (famous for its cheese) to Geneva. Overnight in Geneva.



Lugano

Day 4: Geneva — Montreux — Zermatt (235 Kilometres)

After a morning tour of Geneva, a delightful lakeside drive takes you to Montreux. Continue your climb into the Alps to Zermatt in the shadow of the Matterhorn. Dinner and overnight in Zermatt.

Day 5: Zermatt — Lugano (185 Kilometres)

After a morning at leisure your journey takes you through dramatic mountain scenery to Lugano, with its Italian ambience. Overnight in Lugano.

Day 6: Lugano — Lake Como — St Moritz (140 Kilometres)

You cross into Italy for a magnificent drive along the shores of Lake Como and up Val Bregaglia to fashionable St Moritz, in the lovely Engadine valley. Dinner and overnight in St Moritz.

Day 7: St Moritz — Principality of Lichtenstein — Zurich (210 Kilometres)

We return to Zurich via the tiny Principality of Lichtenstein, one of Europe's smallest states. Transfer to the airport for your onward flight or extend your stay at Zurich.

Total distance: 1,127 kilometres.

Note: Multi Schengen entry visa required.



Tour available as:

- Overland coach tour – Includes pre-booked 4 star accommodation.

Zurich

Downtown Switzerland

(image swiss-image.ch)

Cosmopolitan Zurich, with its lakeside location, historic buildings and lovely parks, is Switzerland's largest city, its leading business and financial centre and one of Europe's most fashionable destinations. Zurich also provides a wide range of cultural delights, including museums, art galleries, concerts, opera, ballet and musicals. The surrounding countryside offers some of the loveliest landscapes in Europe, from the gentle shores of the lakes to towering mountain peaks, from quaint villages to tilted Alpine meadows – all easily accessible via Switzerland's efficient public transport system.

The Bahnhofstrasse, Zurich's main thoroughfare and one of Europe's famous shopping areas, is full of sophisticated shopping emporiums, department stores, confectioners, inviting cafés and renowned banks.

Places of interest: Bahnhofstrasse, Fraumünster Church (windows by Marc Chagall); **Niederdorf**, Museum of Fine Arts, Grossmünster Church and lakeside park.

For the family: Zurich Zoo, Swiss National Museum, **Lindt & Sprüngli chocolate factory**, boat rides and **Alpamare** (Pfäffikon), Europe's biggest indoor water park.

(image swiss-image.ch)



Bahnhofstrasse, Zurich

Best buys: Bahnhofstrasse for high-quality department stores and shops; and **the old town** for boutiques and antique dealers. The quality of goods is extremely high.

Out and about: With more than 1,700 restaurants and bars, Zurich offers a great variety of dining experiences. The plentiful nightlife is largely centred on **Niederdorf** and **Zurich West**.

(image swiss-image.ch)



Limmat river, Zurich

Sporting attractions: Swimming, surfing, sailing, biking and inline skating during summer. Ice skating during winter.



● Landmarks

▲ Places of interest

H HOTELS



Jungfrauoch

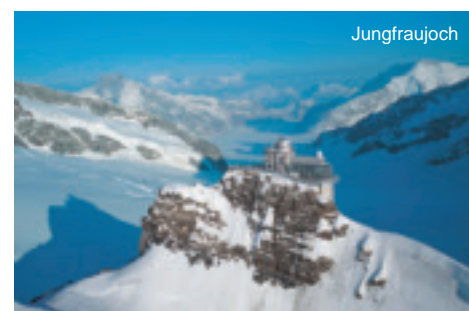
Full-day coach excursion to the 'Top of Europe'

Meet in the morning at Sihlquai in front of the main train station. This unforgettable excursion into the heart of the **Bernese Oberland** takes you to fascinating towns and villages.

From Zurich you travel to **Interlaken** – situated between Lake Thun and Lake Brienz and overlooked by the towering peaks of the Eiger (Ogre), Mönch (Monk) and Jungfrau (Maiden) before negotiating steep mountain roads to the Alpine village of **Lauterbrunnen**. Your train climbs through a seven-kilometre tunnel deep in the mountains to emerge at **Jungfrauoch** at an altitude of 3,454 metres, Europe's highest railway station.

Jungfrauoch, a UNESCO World Heritage site on a saddle between the Mönch and Jungfrau peaks, will reward you with an unsurpassed vista of an incredible world of eternal ice and snow.

From Jungfrauoch the train descends to **Grindelwald**, situated in a sunny valley towered over by the Eiger's dramatic North Face and the mighty **Wetterhorn, Schreckhorn, Mönch** and **Jungfrau**. Legend has it the Mönch stands between the Eiger and the Jungfrau to protect the Maiden. Here your coach awaits for your return journey to Zurich, arriving in the evening.



Park Hyatt Zurich



Location: Beethovenstrasse.

This elegant and contemporary hotel is located in the heart of the city, a few steps away from the lake, the city's financial and commercial district, the famous fashionable shopping street Bahnhofstrasse and Zurich's Old Town. Park Hyatt Zurich combines ultra modern architecture and technology with the latest amenities. The rooms offer spectacular views over the city and feature elegant and warm toned interiors. Zurich International Airport is 10 kilometres away.

After exploring the city, enjoy total relaxation and tranquillity at the Club Olympus spa. Dining at the Parkhuus is a unique experience where mouth-watering signature dishes are freshly prepared in the restaurants' show kitchen. The hotel's iconic Onyx bar is the place to be seen in Zurich.

Facilities: 142 rooms and suites. Two restaurants, bar, 24-hour room service, shops, beauty salon, safety deposit boxes, business

centre, babysitting, interconnecting and non-smoking rooms.

Park King or Twin

Rooms: Air-conditioning, hairdryer, bathrobe, TV, DVD, iPod docking station, data ports, minibar and safe.

Sports and leisure:

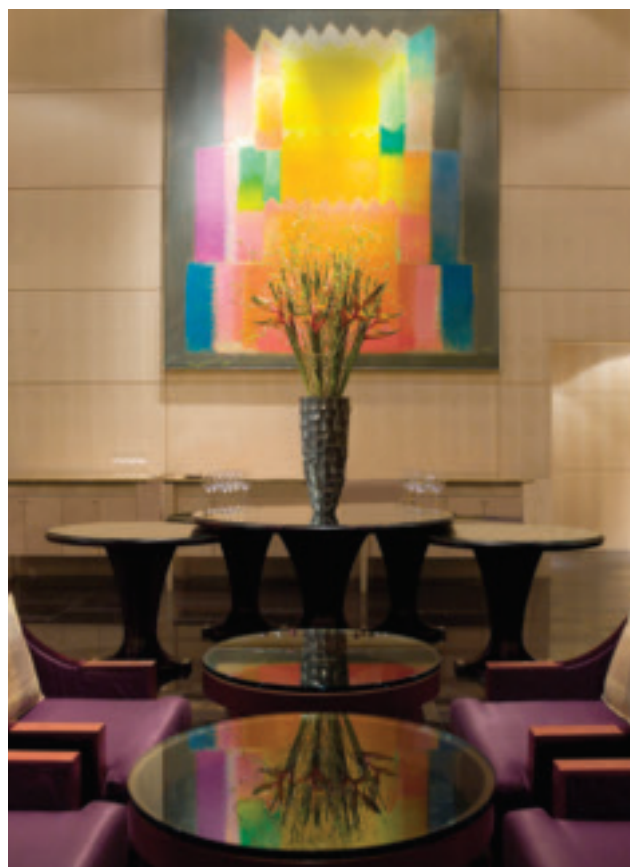
Fitness room, spa, sauna, steam bath and massage.

Check-in: 1500 hours

Check-out: 1200 hours.



Park Twin Room



Hotel Eden Au Lac



Location: Close to the city centre.

This stylish, luxury boutique hotel enjoys a scenic and privileged location along the elegant Utoquai at the shores of Lake Zurich with marvellous views over the lake, the city and the distant Alps. This prestigious property built in 1909 in neo-baroque style, is within walking distance of the famous Bahnhofstrasse and the Opera House. With its harmoniously designed façade, the hotel conveys an impression of aristocratic French flair. Zurich Kloten

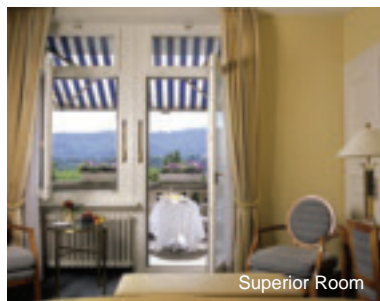
International Airport is 13 kilometres away.

Facilities: 50 rooms and suites. Restaurant, bar, limited hours of room service, babysitting, interconnecting and non-smoking rooms.

Superior Rooms: Air-conditioning, hairdryer, bathrobe, wireless connectivity, minibar and safe.

Check-in: 1400 hours

Check-out: 1200 hours.



Superior Room



Sheraton Neues Schloss

Location: City Centre, close to Bahnhofstrasse and lake.

This small and pristine boutique hotel offers a warm and welcoming atmosphere. Its prime location, close to the famous shopping street Bahnhofstrasse, the Congress Centre, the Opera House, the zoo and the lake makes the hotel an ideal place to stay for business and leisure travellers. Zurich Kloten International Airport is 18 kilometres away.

Facilities: 60 rooms and suites. Restaurant, bar, limited hours of room service, safety deposit boxes, business centre, interconnecting and non-smoking rooms.

Executive Rooms: Air-conditioning, hairdryer, bathrobe, TV, wireless connectivity, data ports, minibar, tea and coffee and safe.

Junior Suites: Additionally these rooms are larger.

Check-in: 1400 hours

Check-out: 1200 hours.



Executive Room



Swissôtel Zürich

Location: Örlikon.

Swissôtel Zürich is located opposite the Zurich Örlikon train station, just five minutes by train from Zurich's city centre. This modern, luxurious hotel is attached to a shopping centre and is within walking distance of the exhibition ground. Zurich Kloten International Airport is five kilometres away.

Facilities: 347 rooms and suites. Two restaurants, two bars, 24-hour room service, shops, hairdresser, beauty salon, safety deposit boxes, business centre, children's activities, babysitting,

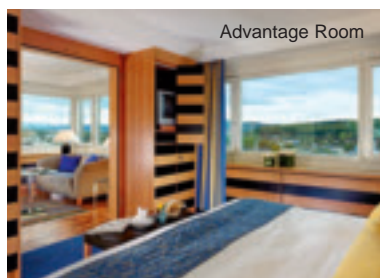
interconnecting and non-smoking rooms.

Advantage Rooms: Air-conditioning, hairdryer, bathrobe, TV, wireless connectivity, minibar, tea and coffee and safe.

Sports and leisure: Indoor pool, fitness room, sauna, jacuzzi, steam bath and massage.

Check-in: 1500 hours

Check-out: 1200 hours.



Advantage Room



Crowne Plaza Zurich

Location: Zurich West.

This modern hotel is located close to the city centre in the trendy Zurich West district, beside the Letzigrund stadium. Public transport is available outside the hotel providing easy access to the city centre. Live evening entertainment awaits you in the bar, whilst visitors are guaranteed the ultimate in relaxation at the hotel's health and fitness club. Zurich Kloten International Airport is 11 kilometres away.

Facilities: 364 rooms and suites. Two restaurants, bar, 24-hour room service, shop, safety deposit boxes, business centre, babysitting, interconnecting and non-smoking rooms.

Standard Rooms: Air-conditioning, hairdryer, TV, data ports and minibar.

Sports and leisure: Indoor pool, fitness centre, spa, sauna, jacuzzi, steam bath, solarium and massage.

Check-in: 1400 hours

Check-out: 1200 hours.



Standard Room



Hotel St Gotthard

Location: Bahnhofstrasse.

With over 110 years of family tradition, this classic hotel is centrally located on Switzerland's most famous street, the world-renowned Bahnhofstrasse and is ideally positioned for visiting the city's main attractions. The hotel has three restaurants and two bars in varying styles, yet characterised by the same impeccable brand of service that has defined the Hotel St Gotthard for more than a century. Zurich Kloten International Airport is 12 kilometres away.

Facilities: 150 rooms and suites. Three restaurants, two bars, limited hours of room service, safety deposit boxes, babysitting, interconnecting and non-smoking rooms.

Standard Rooms: Air-conditioning, hairdryer, TV, data ports, wireless connectivity, minibar, tea and coffee and safe.

Sports and leisure: Sauna, solarium and massage.

Check-in: 1400 hours

Check-out: 1200 hours.



Standard Room

Leoneck Hotel

Location: City centre, near Niederdorf.

This uniquely-styled and charming small hotel is located on Leonhardstrasse in the centre of Zurich, just minutes away from the main train station and shopping area, universities and hospitals. Every room in this intimate hotel is decorated with a unique wall painting which adds a charming touch to the property. The hotel offers a great base from which to explore the city. Zurich Kloten International Airport is 12 kilometres away.

Facilities: 78 rooms and suites. Restaurant, bar, limited hours of room service, business centre, babysitting, interconnecting and non-smoking rooms.

Standard Rooms: These rooms are individually decorated with local murals. Hairdryer, TV, data ports, wireless connectivity and safe.

Check-in: 1400 hours

Check-out: 1200 hours.



Standard Room





Geneva

Capital of peace

Lying at the border of Switzerland and France, Geneva combines Swiss efficiency with Gallic "joie de vivre". With its temperate climate, lively cultural life, fine cuisine and astoundingly lovely surroundings of snow-capped mountains, Alpine lakes, deep forests and enchanting countryside, Geneva is a delight.

Geneva's world-famous lakefront is the centrepiece of the city and offers endless opportunities for recreation and relaxation throughout the year. The Jet d'Eau spouting 140 metres into the air is one of the world's tallest fountains and symbolises Geneva's heritage as a leader in the field of hydraulic power.

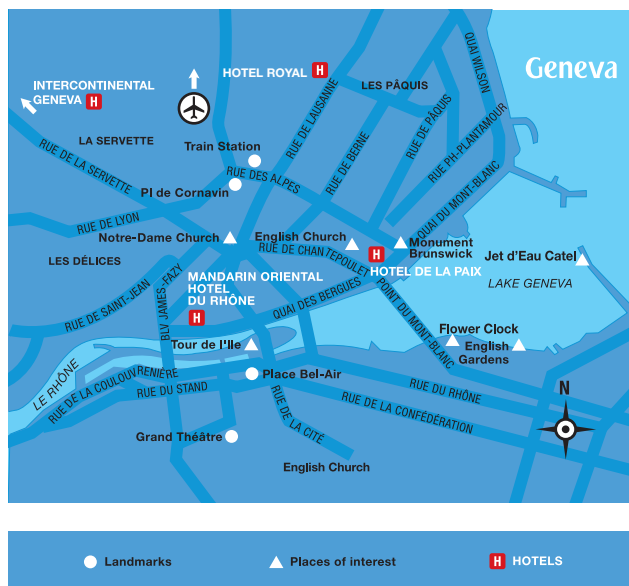
Places of interest: Jet d'Eau fountain, St Peter's Cathedral, the armoury; the Flower Clock at the English Garden; and the old town's museums.

For the family: Lakeshore, United Nations Building, Red Cross Museum, lake cruises and biking.

Best buys: Rue du Rhone, Rue de la Confederation, Rue du Marche and Rue de la Croix-d'Or for almost everything.

Out and about: Music, theatre, casino and the many cafés and restaurants lining the lakefront.

Sporting attractions: Biking, inline skating, swimming, hiking, surfing, sailing and golf during summer. Ice skating during winter.



Mandarin Oriental Hotel du Rhône



Location: City centre, near Lake Geneva.

Located in the heart of Geneva, on the banks of the River Rhone, the shopping area, lake and historic old town are only five minutes away. The elegant Mandarin Oriental Hotel du Rhone's characteristics are bold flourishes of Art Deco design, softened by the sun-filled palette of colours and beautiful lighting, luxury materials including silk, Italian marble, parquet and leather. Genève Cointrin International Airport is seven kilometres away.

Le Neptune, the fine dining restaurant is known to be one of the leading restaurants in the city, offering delectable cuisine and is the proud recipient of one Michelin star. Le café Rafael is popular with both hotel guests and local clientele and has a lovely summer terrace.

Facilities: 192 rooms and suites. Two restaurants, bar, 24-hour room service, shop, hairdresser, beauty salon, safety deposit boxes, business centre, babysitting, interconnecting and non-smoking rooms. Suitable for physically challenged.

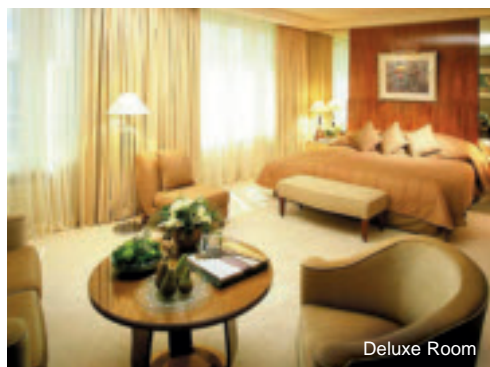
Superior Rooms: Air-conditioning, hairdryer, bathrobe, TV, fax, data ports, wireless connectivity, minibar, iron and safe.

Deluxe Rooms: Additionally these rooms are larger with a sitting area.

Sports and leisure: Fitness centre, sauna, steam bath, solarium and massage.

Check-in: 1400 hours

Check-out: 1200 hours.



Deluxe Room



Hôtel de la Paix



Location: Lake Geneva.

Hôtel de la Paix, built in 1865 in Italian renaissance style, enjoys an excellent location on the shores of Lake Geneva. It boasts breathtaking views of the snow-capped peaks of Mont Blanc and is only a few minutes away from the shopping area. The hotel offers ultimate comfort, exquisite cuisine and high quality service. The interior design is modern, contemporary and well balanced with the building's traditional charm. Genève Cointrin International Airport is five kilometres away.

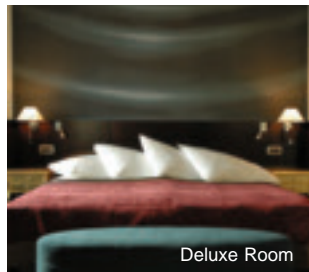
Facilities: 84 rooms and suites. Restaurant, bar, 24-hour room service, safety deposit boxes, business centre, babysitting, interconnecting and non-smoking rooms.

Superior Rooms: Air-conditioning, hairdryer, bathrobe, TV, data ports, wireless connectivity, minibar, coffee machine and safe.

Deluxe Rooms: Additionally these rooms are larger.

Check-in: 1400 hours

Check-out: 1200 hours.



Deluxe Room



InterContinental Geneva

Location: Near old town.

The InterContinental Geneva is a stately 18-storey tower in the centre of the diplomatic district near Lake Geneva and the United Nations office. Surrounded by lush parkland and marvellous views over the distant Alps, the hotel is close to the old town, Botanical gardens, the Ariana Museum and the Red Crescent Museum.

The Woods Restaurant serves fine international and regional cuisine. Genève Cointrin International Airport is four kilometres away.

Facilities: 328 rooms and suites. Restaurant, two bars, 24-hour room service, shop, beauty salon, babysitting, interconnecting and non-smoking rooms.

Standard Rooms: Air-conditioning, hairdryer, bathrobe, TV, video, DVD, wireless connectivity, minibar and safe.

Sports and leisure: Indoor pool, fitness centre, sauna and jacuzzi.

Check-in: 1400 hours

Check-out: 1200 hours.



Standard Room



Hotel Royal

Location: Rue de Lausanne.

A contrasting blend of heritage and innovation gives this traditional hotel a distinctive character. Inspired by a neoclassical architectural style, this new hotel features an extraordinary mix of noble wood, precious marble and plush fabrics to create a cocoon of homely warmth, comfort and luxury. The Rive Droite Brasserie offers a refined and extensive menu for the pleasure of demanding gourmets with fresh ingredients chosen with care by the chef. Genève Cointrin International Airport is six kilometres away.

Facilities: 202 rooms and suites.

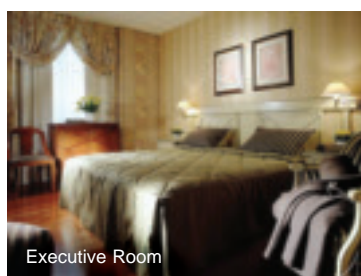
Restaurant, bar, 24-hour room service, interconnecting and non-smoking rooms.

Executive Rooms: Air-conditioning, hairdryer, bathrobe, TV, video, wireless connectivity, minibar, tea and coffee and safe.

Sports and leisure: Fitness centre and sauna.

Check-in: 1500 hours

Check-out: 1200 hours.



Executive Room





Interlaken

Gateway to the Top of Europe

Interlaken owes its magnificent location to the vagaries of the last Ice Age. Located between the two alpine lakes, Lake Thun and Lake Brienz and at the feet of the three great mountains, the Eiger, Monch and Jungfrau, it is an ideal place from which to explore the scenery and villages of the Bernese Oberland. Explore the nearby villages of Grindelwald, Wegen,

Lauterbrunnen and Murren. Spend a day on "Top of the World" or strolling through the Höheweg for great shopping and restaurants.

Places of interest: St Beatus Caves, Höheweg, cruises on Lake Thun and Lake Brienz.

For the family: Jungfrauoch, the Top of Europe, with glacier park; **Mystery Park, Schilthorn** summit; Pitz Gloria revolving restaurant made famous as a James Bond location.

Best buys: The **Höheweg**, Interlaken's fine boulevard flanked by shops and souvenir stores.

Out and about: A variety of restaurants, nightclubs and bars.

Sporting attractions: Swimming, sailing, golf, tennis, horse riding and biking during summer. Ice-skiing, cross-country skiing and snowboarding during winter.



Lucerne

The city of lights

Lucerne, the gateway to central Switzerland is located on the shores of Lake Lucerne and is embedded within an impressive mountainous panorama. The city offers stunning views of Mount Rigi and Mount Pilatus. Complete with gable painting, the covered, mediaeval Chapel Bridge forms the centrepiece of the town. Historic houses decorated

with frescos line the picturesque town squares and 'Weinmarkt' square in the old town.

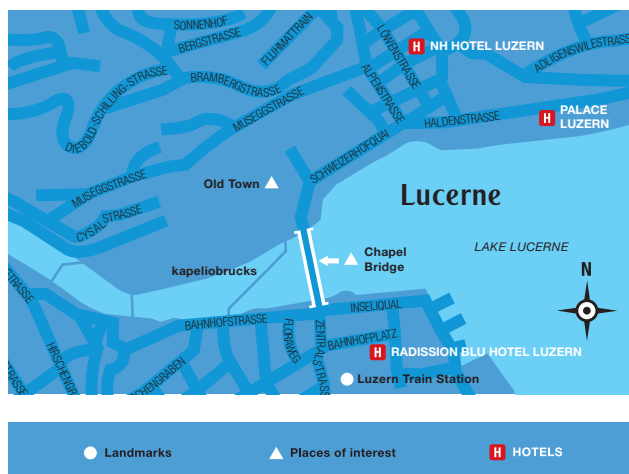
Places of interest: The **Chapel Bridge**, Lucerne's landmark water tower, Lion Monument, St Peter's Chapel; Franciscan Church, typical mediaeval Gothic mendicant architecture; Water Spike; Spreuer Bridge; Musegg Wall; **Old City Squares;** the Hof Church and the Rittersche Palaces.

For the family: Boat trip on Lake Lucerne; **Glacier Garden;** **Swiss Transport Museum;** Deer Park.

Best buys: Department stores, watch shops, boutiques, flea markets and craft markets.

Out and about: Concerts, restaurants, bars and night boat (with folklore dinner show).

Sporting attractions: Sailing, hiking, biking, inline skating, swimming, paragliding and golf.



Victoria-Jungfrau Grand Hotel & Spa

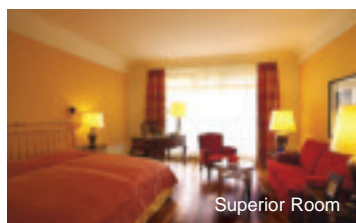


Location: Town centre.

Offering luxurious accommodation and a warm atmosphere, this elegant hotel is splendidly situated in the centre of Interlaken, with uninterrupted views of the magnificent Jungfrau. The beautiful spa offers many facilities. Focal points are the ESPA Oasis combining Asian and Western treatments in exquisite natural surroundings. Zurich Kloten International Airport is 180 kilometres away.



Facilities: 222 rooms and suites. Three restaurants, two bars, limited hours of room service, shops, hairdresser, beauty salon, safety deposit boxes, business centre, children's activities, babysitting and interconnecting rooms.



Superior Room

Superior Rooms: Hairdryer, bathrobe, TV, data ports, wireless connectivity, minibar and safe.

Sports and leisure: Indoor pool, fitness centre, spa, sauna, jacuzzi, steam bath, solarium, massage, tennis courts, gymnastics and billiards.

Check-in: 1500 hours

Check-out: 1200 hours.



Lindner Grand Hotel Beau Rivage

Location: Town centre, near East station.

The Lindner Grand Hotel Beau Rivage is located in the city centre, just five minutes away from the Interlaken East railway station.

The hotel offers a glorious view of the Jungfrauoch amidst the imposing Swiss mountains. This elegant and traditional hotel offers excellent service, culinary specialties and a wide range of facilities. Zurich Kloten International Airport is 180 kilometres away.

Facilities: 101 rooms and suites. Two restaurants, bar, limited hours of room service, beauty salon, babysitting and interconnecting rooms.

Classic Rooms: Hairdryer, bathrobe, TV, data ports, minibar and safe.

Sports and leisure: Indoor pool, fitness room, spa, sauna, steam bath, solarium and massage.

Check-in: 1400 hours

Check-out: 1200 hours.



Hotel Krebs

Location: Town centre, near West station.

The hotel is centrally located in the popular shopping area of Interlaken and close to Interlaken West railway station. Whether you want to simply soak up the atmosphere on the streets outside the hotel, drink coffee on the terrace or really get involved in Interlaken's surrounds, the hotel is the perfect base from which to explore. Zurich Kloten International Airport is 180 kilometres away.

Facilities: 44 rooms and suites. Two restaurants, two bars, safety deposit boxes, shop, babysitting and non-smoking rooms.

Standard Rooms:

Air-conditioning, hairdryer, TV, data ports, minibar, tea and coffee and safe.

Sports and leisure: Indoor pool.

Check-in: 1500 hours

Check-out: 1200 hours.



Standard Room



Palace Luzern



Location: City centre on Lake Lucerne Promenade.

Combining old-world elegance with up-to-date amenities, the Palace Luzern, offers beautiful views of the Alps and Lake Lucerne situated close to the historic city centre and the main shopping area. Experience the culinary culture of the south at the hotel's contemporary style Restaurant Jasper. The new spa ESPA offers a state-of-the-art world of wellness. Zurich Kloten International Airport is 65 kilometres away.

Facilities: 136 rooms and suites. Three restaurants, bar, limited hours of room service, shop, safety deposit boxes, business centre, children's

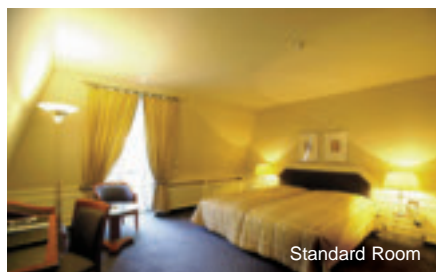
activities, babysitting and interconnecting rooms.

Standard Rooms: Air-conditioning, hairdryer, bathrobe, TV, wireless connectivity, minibar and safe.

Sports and leisure: Fitness room, spa, sauna, steam bath, solarium and massage.

Check-in: 1400 hours

Check-out: 1200 hours.



Standard Room



Radisson Blu Hotel Luzern

Location: City centre.

This modern, contemporary and stylish designer hotel is centrally located on the banks of Lake Lucerne and reflects the city of lights with its glazed façade and prism-like architecture. The city's interesting sights, the shopping area, the train station and the culture and convention centre KKL, are only a short walk away. Zurich Kloten International Airport is 65 kilometres away.

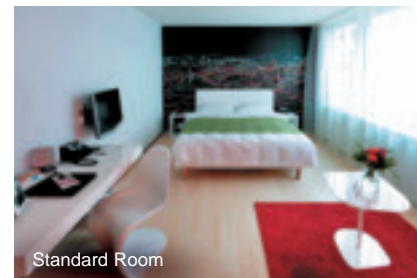
Facilities: 165 rooms and suites. Restaurant, two bars, 24-hour room service, business centre, babysitting, interconnecting and non-smoking rooms. Suitable for the physically challenged.

Standard Rooms: These rooms offer a city or lake view. Air-conditioning, hairdryer, TV, data ports, wireless connectivity, minibar, tea and coffee and safe.

Sports and leisure: Fitness room, sauna and steam bath.

Check-in: 1400 hours

Check-out: 1200 hours.



Standard Room

NH Hotel Luzern

Location: City centre, near old town.

NH Hotel Luzern is centrally located, 10 minutes away from the railway station, adjacent to the old town and main shopping area, and close to the lake and the famous Lion monument. A modern property, it provides quality services and facilities in a comfortable environment, all designed for the leisure visitor. The hotel's restaurant offers excellent service, good home cooking as well as

international specialities. Lucerne's surrounding countryside, lakes and mountains are all within easy reach. Zurich Kloten International Airport is 65 kilometres away.

Facilities: 110 rooms and suites. Restaurant, safety deposit boxes, babysitting and non-smoking rooms.

Standard Rooms: Hairdryer, TV, wireless connectivity and safe.

Check-in: 1500 hours

Check-out: 1200 hours.



Standard Room

